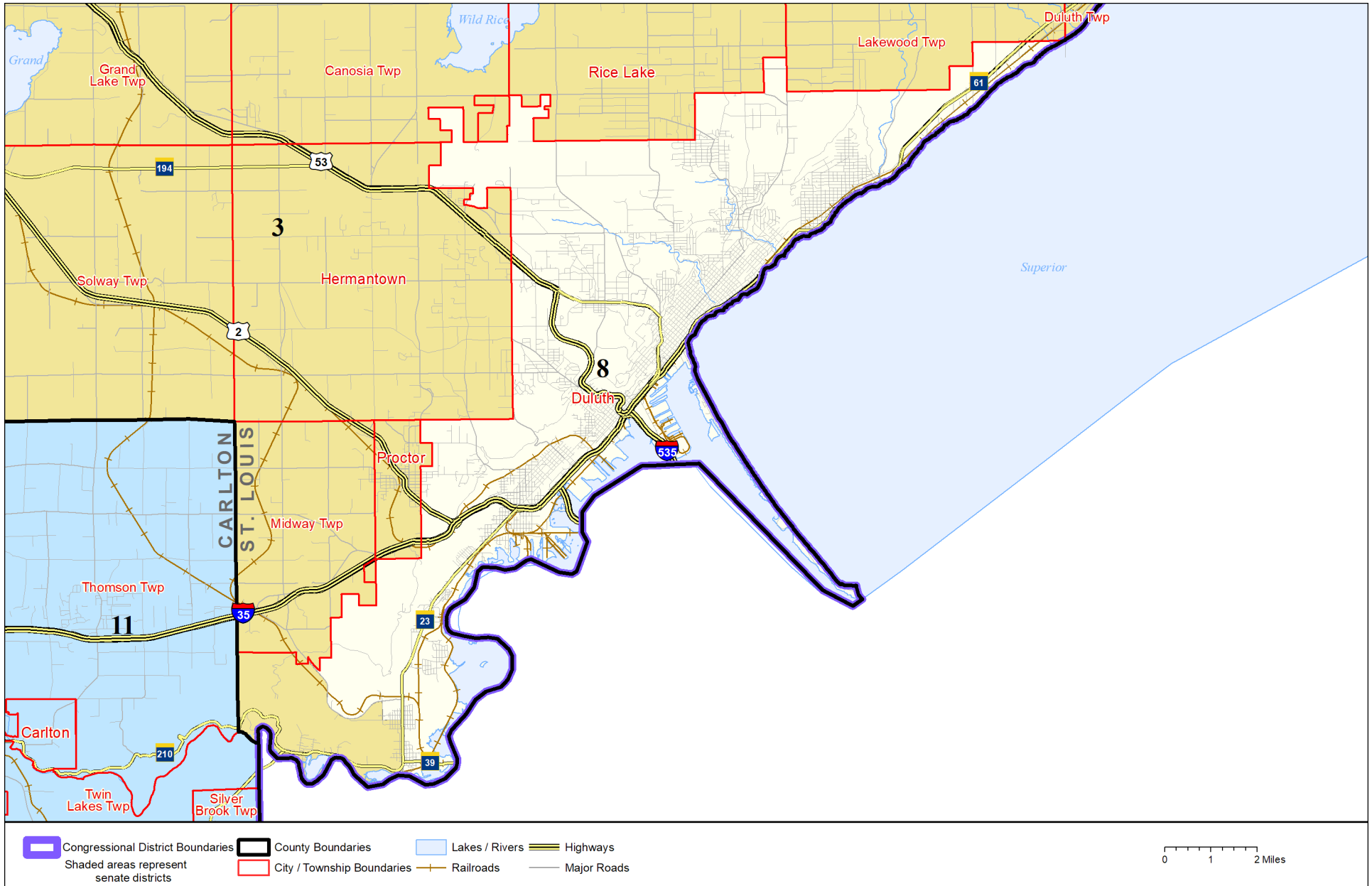


Senate District 8



Published by Office of the Minnesota Secretary of State, Elections Division. Current as of May 2024. Look up districts & polling places at <https://pollfinder.sos.mn.gov>

About this map

This map shows the Congressional and Legislative Districts ordered by the Special Redistricting Panel in the matter of *Wattson, et al. v. Simon, et al*, No. A21-0243 and A21-0546, on February 15, 2022, as modified by the legislature, as corrected under *Minnesota Statutes* 2.91, subd. 2, or as adjusted under *Minnesota Statutes* 204B.146, subd. 3. Derived from precinct boundaries that are maintained by the Secretary of State and available for download at the [Minnesota Geospatial Commons](https://gisdata.mn.gov) (<https://gisdata.mn.gov>). Road data is from Mn/DOT and U.S. Census (Statewide) and NCompass (Metro). Rail data is from Mn/DOT. Water data is from MN DNR.

District Description

Territory of Minnesota Senate District 8:

- This area in St. Louis County:
 - These precincts in Duluth:
 - DULUTH P-1
 - DULUTH P-10
 - DULUTH P-11
 - DULUTH P-12
 - DULUTH P-13
 - DULUTH P-14
 - DULUTH P-15
 - DULUTH P-16
 - DULUTH P-17
 - DULUTH P-18
 - DULUTH P-19
 - DULUTH P-2
 - DULUTH P-21
 - DULUTH P-22
 - DULUTH P-23
 - DULUTH P-24
 - DULUTH P-25
 - DULUTH P-26
 - DULUTH P-27
 - DULUTH P-28
 - DULUTH P-29
 - DULUTH P-3
 - DULUTH P-30
 - DULUTH P-31
 - DULUTH P-32
 - DULUTH P-33
 - DULUTH P-35
 - DULUTH P-4
 - DULUTH P-5
 - DULUTH P-6
 - DULUTH P-7
 - DULUTH P-8
 - DULUTH P-9