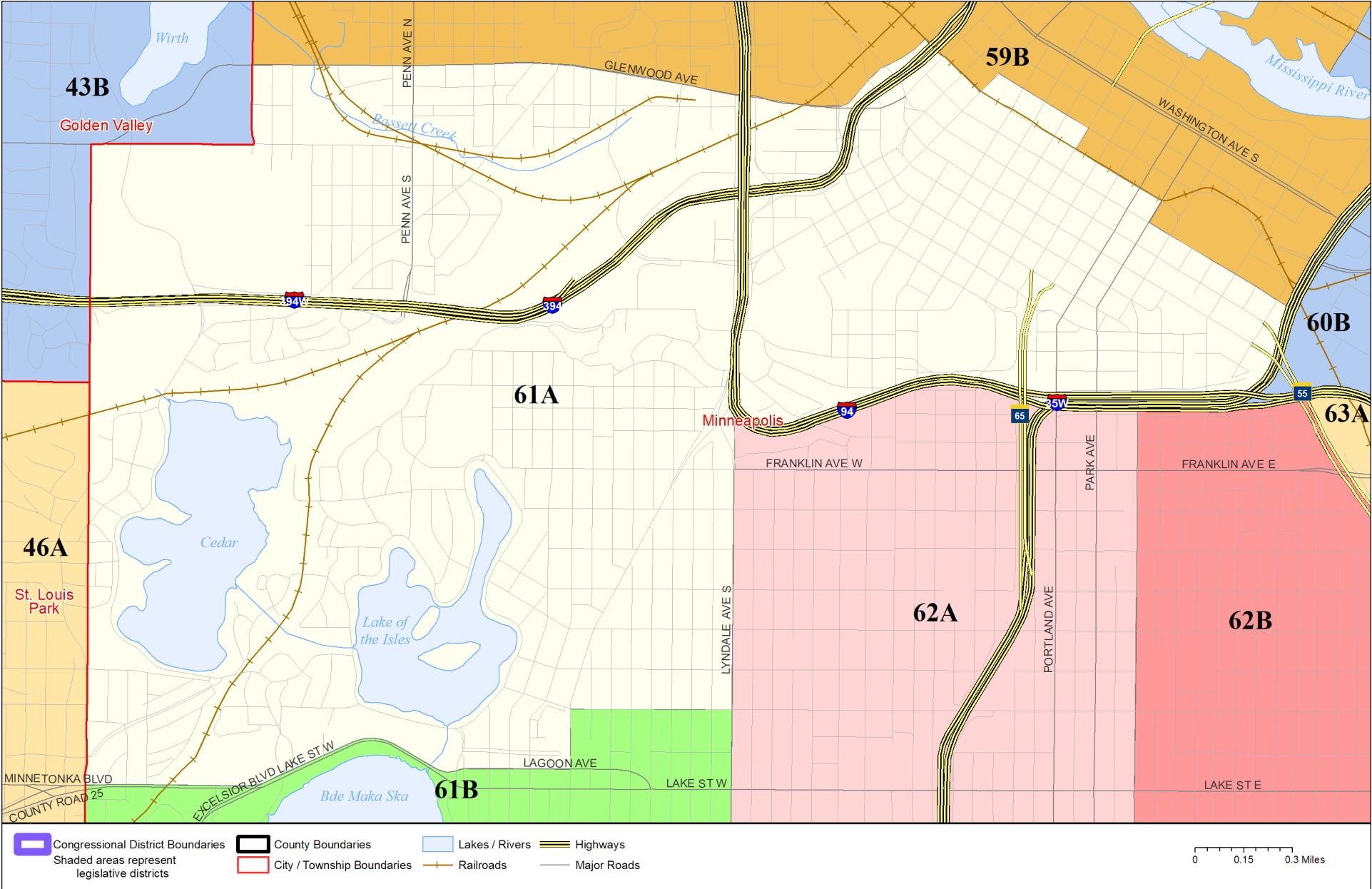


# Legislative District 61A



Published by Office of the Minnesota Secretary of State, Elections Division. Current as of May 2024. Look up districts & polling places at <https://pollfinder.sos.mn.gov>

**About this map**  
 This map shows the Congressional and Legislative Districts ordered by the Special Redistricting Panel in the matter of *Wattson, et al. v. Simon, et al*, No. A21-0243 and A21-0546, on February 15, 2022, as modified by the legislature, as corrected under *Minnesota Statutes* 2.91, subd. 2, or as adjusted under *Minnesota Statutes* 204B.146, subd. 3. Derived from precinct boundaries that are maintained by the Secretary of State and available for download at the [Minnesota Geospatial Commons](https://gisdata.mn.gov) (<https://gisdata.mn.gov>). Road data is from Mn/DOT and U.S. Census (Statewide) and NCompass (Metro). Rail data is from Mn/DOT. Water data is from MN DNR.

## **District Description**

Territory of Minnesota Legislative District 61A:

- This area in Hennepin County:
  - These precincts in Minneapolis:
    - MINNEAPOLIS W-10 P-01
    - MINNEAPOLIS W-5 P-09
    - MINNEAPOLIS W-6 P-01
    - MINNEAPOLIS W-6 P-02
    - MINNEAPOLIS W-7 P-01
    - MINNEAPOLIS W-7 P-02
    - MINNEAPOLIS W-7 P-03
    - MINNEAPOLIS W-7 P-04
    - MINNEAPOLIS W-7 P-05
    - MINNEAPOLIS W-7 P-06
    - MINNEAPOLIS W-7 P-07
    - MINNEAPOLIS W-7 P-08
    - MINNEAPOLIS W-7 P-09