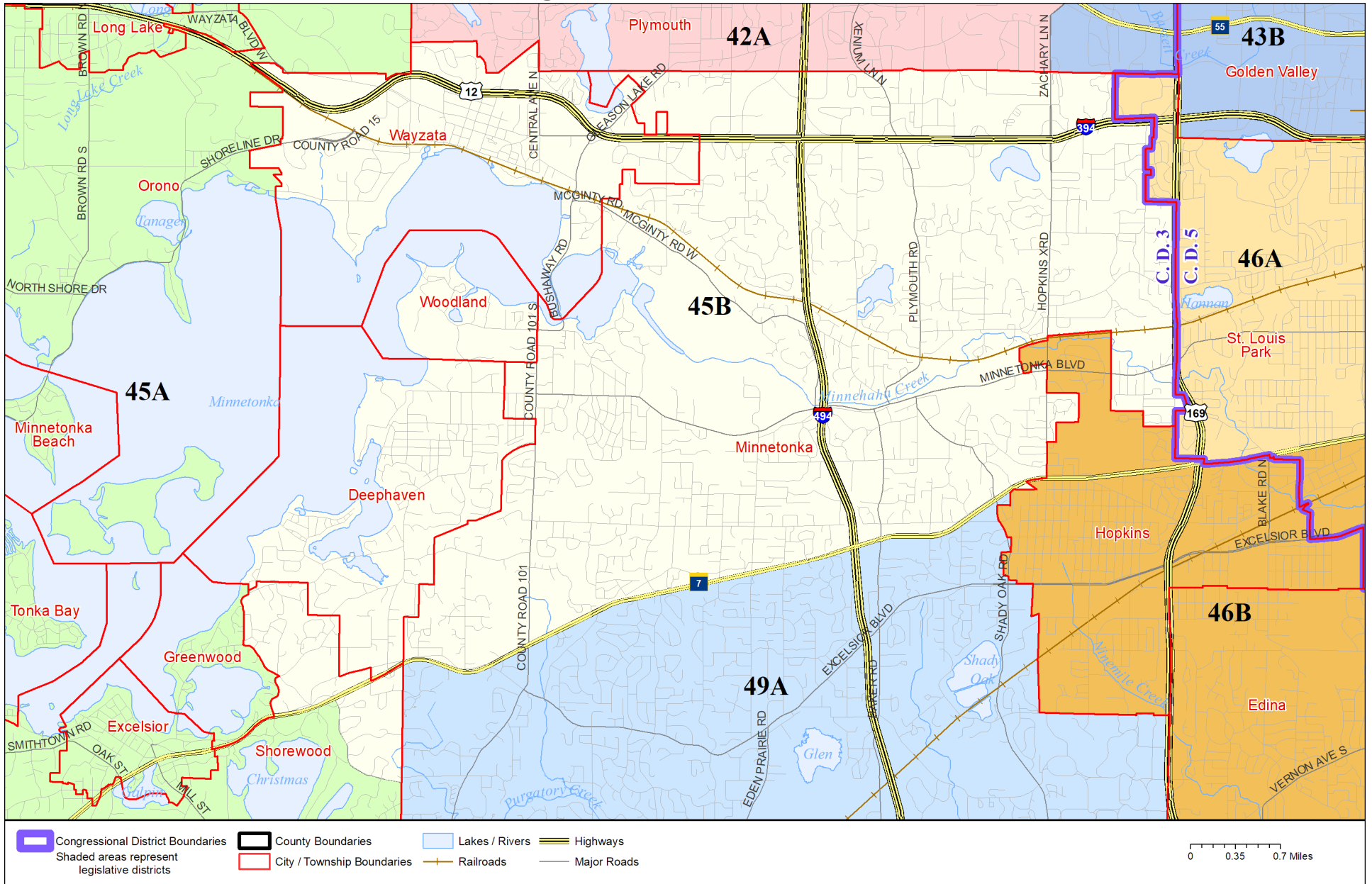


# Legislative District 45B



Published by Office of the Minnesota Secretary of State, Elections Division. Current as of May 2024. Look up districts & polling places at <https://pollfinder.sos.mn.gov>

## About this map

This map shows the Congressional and Legislative Districts ordered by the Special Redistricting Panel in the matter of *Wattson, et al. v. Simon, et al*, No. A21-0243 and A21-0546, on February 15, 2022, as modified by the legislature, as corrected under *Minnesota Statutes* 2.91, subd. 2, or as adjusted under *Minnesota Statutes* 204B.146, subd. 3. Derived from precinct boundaries that are maintained by the Secretary of State and available for download at the [Minnesota Geospatial Commons](https://gisdata.mn.gov) (<https://gisdata.mn.gov>). Road data is from Mn/DOT and U.S. Census (Statewide) and NCompass (Metro). Rail data is from Mn/DOT. Water data is from MN DNR.

## District Description

Territory of Minnesota Legislative District 45B:

- This area in Hennepin County:
  - Deephaven
  - These precincts in Minnetonka:
    - MINNETONKA W-1 P-E
    - MINNETONKA W-1 P-F
    - MINNETONKA W-2 P-A
    - MINNETONKA W-2 P-B
    - MINNETONKA W-2 P-C
    - MINNETONKA W-2 P-D
    - MINNETONKA W-2 P-E
    - MINNETONKA W-3 P-A
    - MINNETONKA W-3 P-B
    - MINNETONKA W-3 P-C
    - MINNETONKA W-3 P-D
    - MINNETONKA W-3 P-E
    - MINNETONKA W-4 P-A
  - These precincts in Shorewood:
    - SHOREWOOD P-3
  - Wayzata
  - Woodland