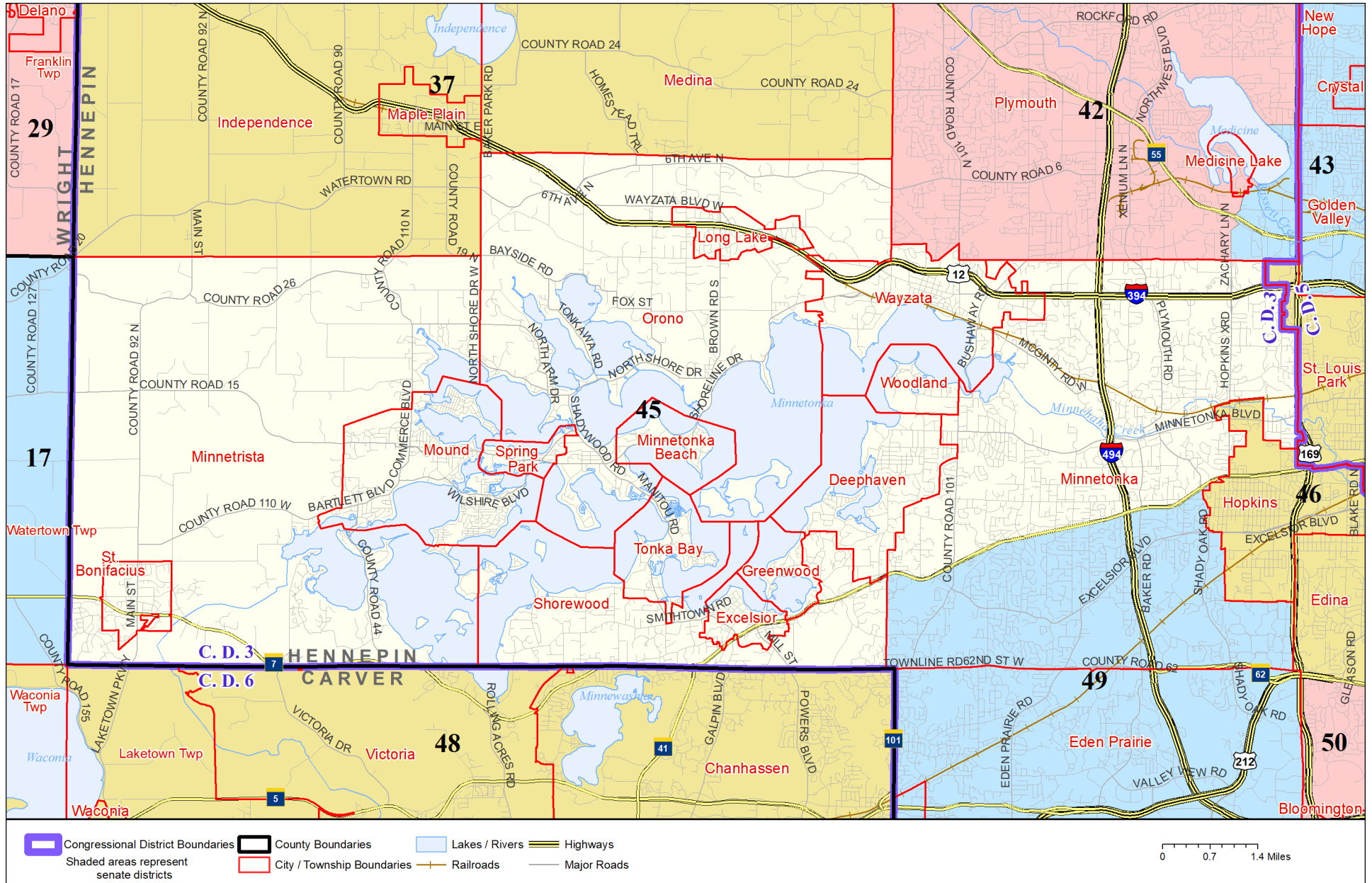


Senate District 45



Published by Office of the Minnesota Secretary of State, Elections Division. Current as of February 2024. Look up districts & polling places at <https://pollfinder.sos.mn.gov>

About this map

This map shows the Congressional and Legislative Districts ordered by the Special Redistricting Panel in the matter of *Wattson, et al. v. Simon, et al.*, No. A21-0243 and A21-0546, on February 15, 2022, as modified by 2022 Session Laws Chapter 92, as corrected under *Minnesota Statutes* 2.91, subd. 2, or as adjusted under *Minnesota Statutes* 204B.146, subd. 3. Derived from precinct boundaries that are maintained by the Secretary of State and available for download at the [Minnesota Geospatial Commons](https://gisdata.mn.gov) (<https://gisdata.mn.gov>). Road data is from Mn/DOT and U.S. Census (Statewide) and NCompass (Metro). Rail data is from Mn/DOT. Water data is from MN DNR.

District Description

Territory of Minnesota Senate District 45:

- This area in Hennepin County:
 - Deephaven
 - Excelsior
 - Greenwood
 - Long Lake
 - These precincts in Minnetonka:
 - MINNETONKA W-1 P-E
 - MINNETONKA W-1 P-F
 - MINNETONKA W-2 P-A
 - MINNETONKA W-2 P-B
 - MINNETONKA W-2 P-C
 - MINNETONKA W-2 P-D
 - MINNETONKA W-2 P-E
 - MINNETONKA W-3 P-A
 - MINNETONKA W-3 P-B
 - MINNETONKA W-3 P-C
 - MINNETONKA W-3 P-D
 - MINNETONKA W-3 P-E
 - MINNETONKA W-4 P-A
 - Minnetonka Beach
 - Minnetrista
 - Mound
 - Orono
 - St Bonifacius
 - Shorewood
 - Spring Park
 - Tonka Bay
 - Wayzata
 - Woodland