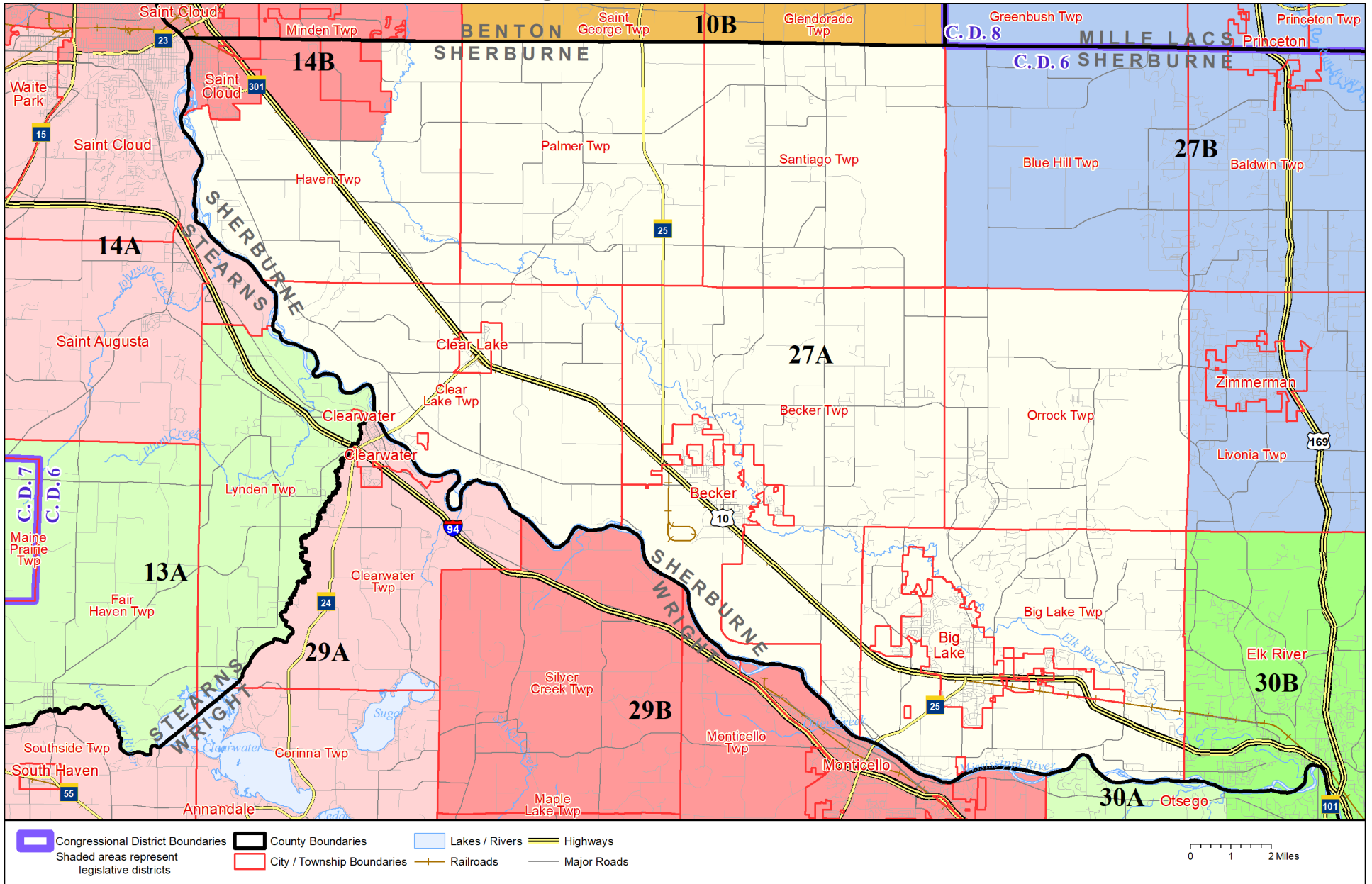


Legislative District 27A



Published by Office of the Minnesota Secretary of State, Elections Division. Current as of February 2022. Look up districts & polling places at <https://pollfinder.sos.state.mn.us>

About this map

This map shows the Congressional and Legislative Districts ordered by the Special Redistricting Panel in the matter of *Wattson, et al. v. Simon, et al.*, No. A21-0243 and A21-0546, on February 15, 2022, as modified by 2022 Session Laws Chapter 92, as corrected under *Minnesota Statutes* 2.91, subd. 2, or as adjusted under *Minnesota Statutes* 204B.146, subd. 3. Boundaries from LCC-GIS derived from U.S. Census. Road data is from Mn/DOT and U.S. Census (Statewide) and NCompass (Metro). Rail data is from Mn/DOT. Water data is from MN DNR.

District Description

Territory of Minnesota Legislative District 27A:

- This area in Sherburne County:
 - Becker
 - Becker Twp
 - Big Lake
 - Big Lake Twp
 - Clear Lake
 - Clear Lake Twp
 - These precincts in Haven Twp:
 - HAVEN TWP P-2
 - Orrock Twp
 - Palmer Twp
 - Santiago Twp