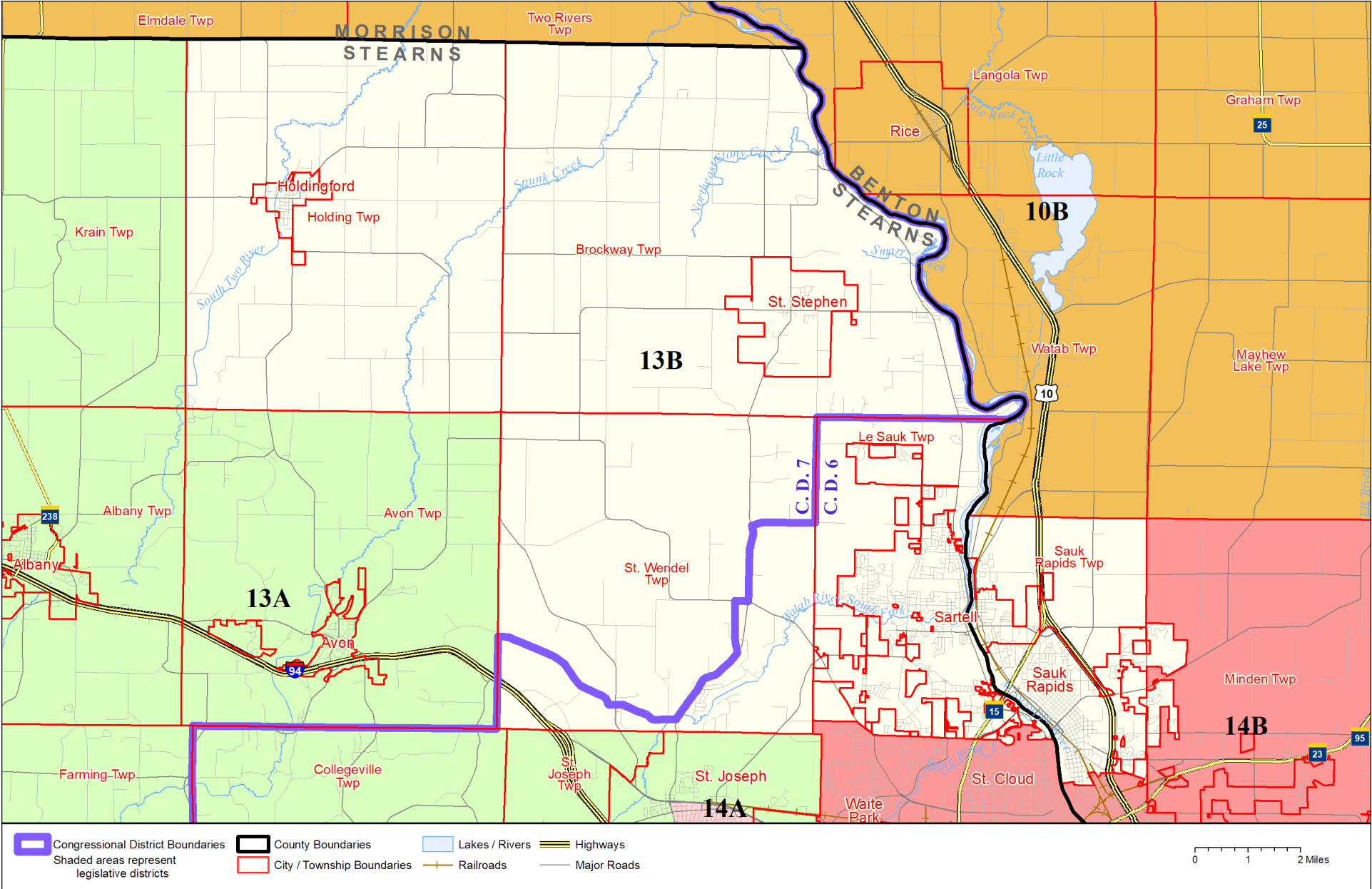


Legislative District 13B



Published by Office of the Minnesota Secretary of State, Elections Division. Current as of May 2024. Look up districts & polling places at <https://pollfinder.sos.mn.gov>

About this map
 This map shows the Congressional and Legislative Districts ordered by the Special Redistricting Panel in the matter of *Wattson, et al. v. Simon, et al*, No. A21-0243 and A21-0546, on February 15, 2022, as modified by the legislature, as corrected under *Minnesota Statutes* 2.91, subd. 2, or as adjusted under *Minnesota Statutes* 204B.146, subd. 3. Derived from precinct boundaries that are maintained by the Secretary of State and available for download at the [Minnesota Geospatial Commons](https://gisdata.mn.gov) (<https://gisdata.mn.gov>). Road data is from Mn/DOT and U.S. Census (Statewide) and NCompass (Metro). Rail data is from Mn/DOT. Water data is from MN DNR.

District Description

Territory of Minnesota Legislative District 13B:

- This area in Benton County:
 - These precincts in Minden Twp:
 - MINDEN TWP P-2
 - Sartell
 - These precincts in Sauk Rapids:
 - SAUK RAPIDS P-1
 - SAUK RAPIDS P-2
 - SAUK RAPIDS P-3
 - SAUK RAPIDS P-4
 - SAUK RAPIDS P-5
 - Sauk Rapids Twp
- This area in Stearns County:
 - Brockway Twp
 - Holding Twp
 - Holdingford
 - Le Sauk Twp
 - St. Stephen
 - St. Wendel Twp
 - Sartell