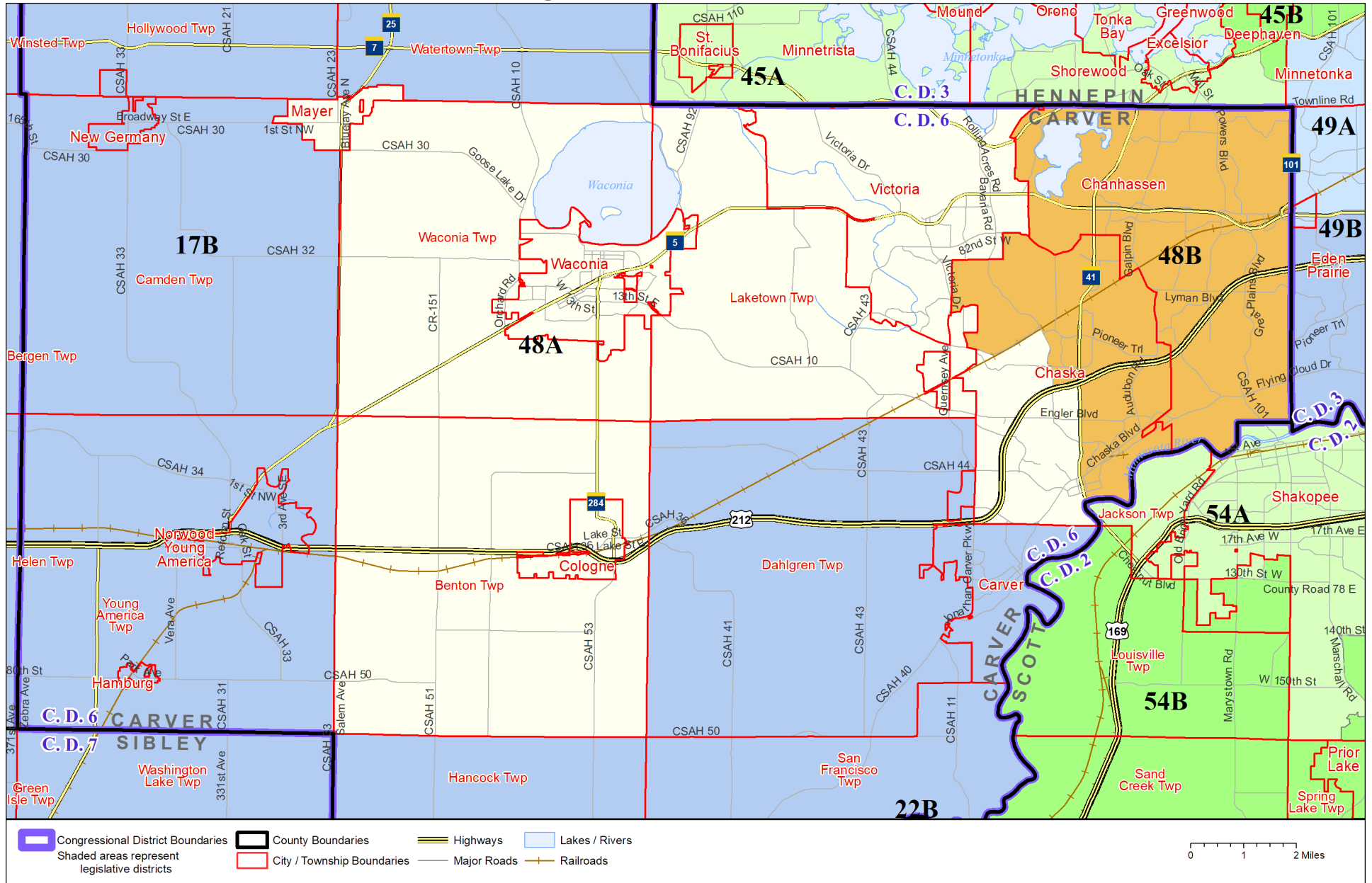


Legislative District 48A



Published by Office of the Minnesota Secretary of State, Elections Division. Current as of April 2025. Look up districts & polling places at <https://pollfinder.sos.mn.gov>

About this map

This map shows the Congressional and Legislative Districts ordered by the Special Redistricting Panel in the matter of *Wattson, et al. v. Simon, et al*, No. A21-0243 and A21-0546, on February 15, 2022, as modified by the legislature, as corrected under *Minnesota Statutes* 2.91, subd. 2, or as adjusted under *Minnesota Statutes* 204B.146, subd. 3. Derived from precinct boundaries that are maintained by the Secretary of State and available for download at the [Minnesota Geospatial Commons](https://gisdata.mn.gov) (<https://gisdata.mn.gov>). Road and rail data is from Mn/DOT. Water data is from MN DNR.

District Description

Territory of Minnesota Legislative District 48A:

- This area in Carver County:
 - Benton Twp
 - These precincts in Chaska:
 - CHASKA W-1 P-2
 - CHASKA W-2 P-2
 - Cologne
 - Laketown Twp
 - Mayer
 - Victoria
 - Waconia
 - Waconia Twp