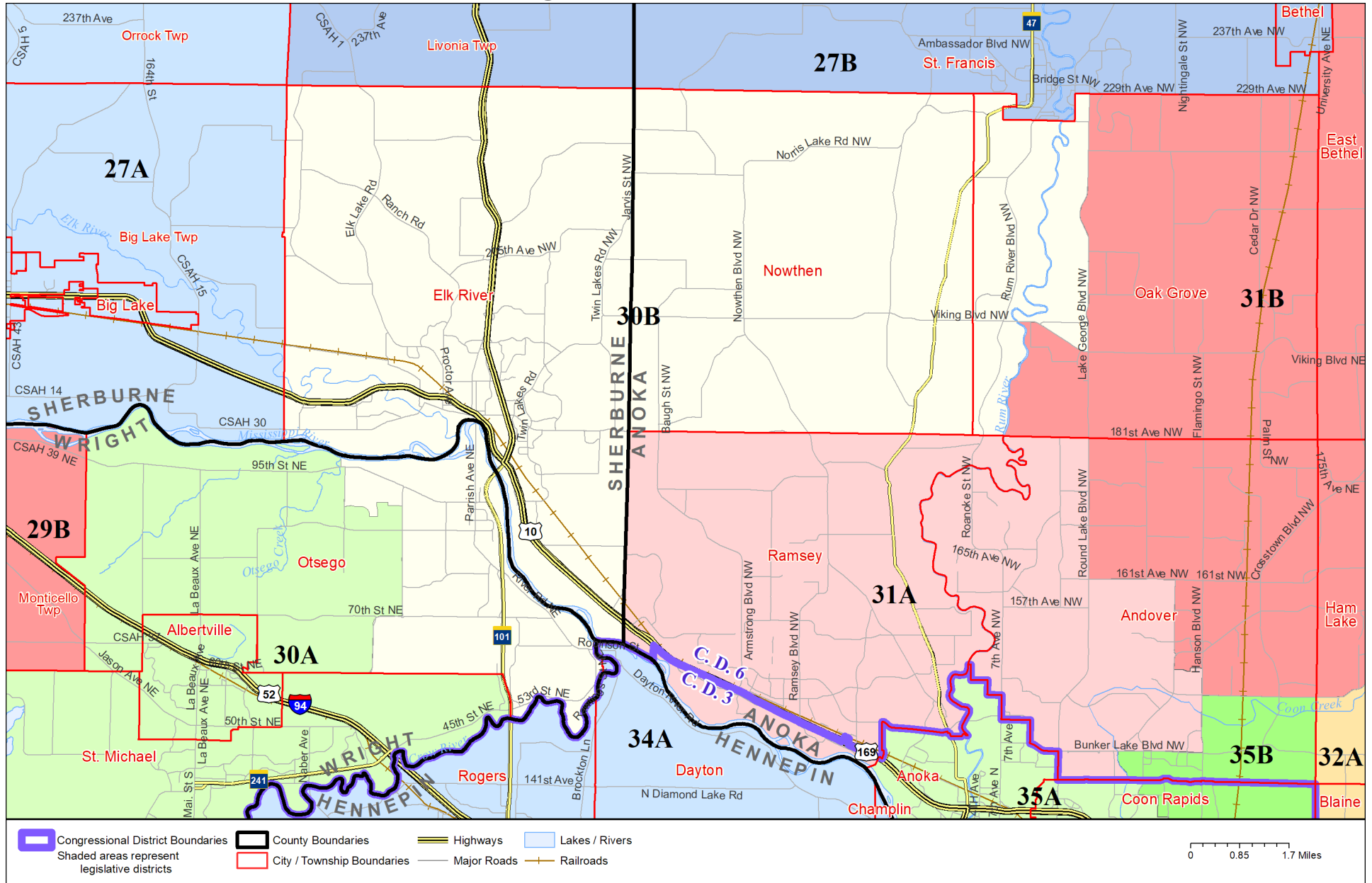


Legislative District 30B



Published by Office of the Minnesota Secretary of State, Elections Division. Current as of April 2025. Look up districts & polling places at <https://pollfinder.sos.mn.gov>

About this map

This map shows the Congressional and Legislative Districts ordered by the Special Redistricting Panel in the matter of *Wattson, et al. v. Simon, et al*, No. A21-0243 and A21-0546, on February 15, 2022, as modified by the legislature, as corrected under *Minnesota Statutes* 2.91, subd. 2, or as adjusted under *Minnesota Statutes* 204B.146, subd. 3. Derived from precinct boundaries that are maintained by the Secretary of State and available for download at the [Minnesota Geospatial Commons](https://gisdata.mn.gov) (<https://gisdata.mn.gov>). Road and rail data is from Mn/DOT. Water data is from MN DNR.

District Description

Territory of Minnesota Legislative District 30B:

- This area in Anoka County:
 - Nowthen
 - These precincts in Oak Grove:
 - OAK GROVE P-2
- This area in Sherburne County:
 - Elk River
- This area in Wright County:
 - These precincts in Otsego:
 - OTSEGO CITY P3B
 - OTSEGO CITY P4B
 - OTSEGO CITY P5B