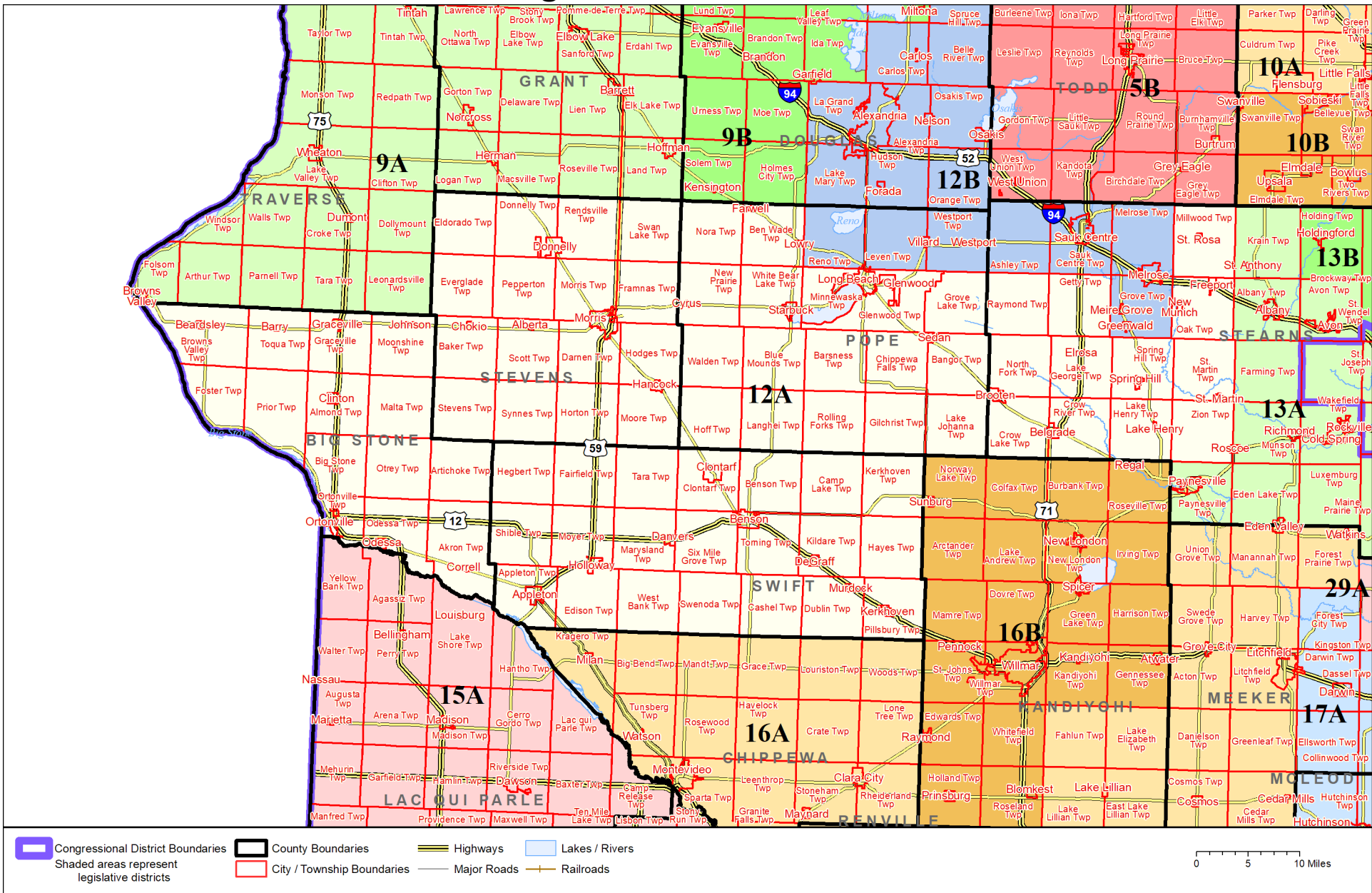


Legislative District 12A



Published by Office of the Minnesota Secretary of State, Elections Division. Current as of April 2025. Look up districts & polling places at <https://pollfinder.sos.mn.gov>

About this map

This map shows the Congressional and Legislative Districts ordered by the Special Redistricting Panel in the matter of *Wattson, et al. v. Simon, et al.*, No. A21-0243 and A21-0546, on February 15, 2022, as modified by the legislature, as corrected under *Minnesota Statutes* 2.91, subd. 2, or as adjusted under *Minnesota Statutes* 204B.146, subd. 3. Derived from precinct boundaries that are maintained by the Secretary of State and available for download at the [Minnesota Geospatial Commons](https://gisdata.mn.gov) (<https://gisdata.mn.gov>). Road and rail data is from Mn/DOT. Water data is from MN DNR.

District Description

Territory of Minnesota Legislative District 12A:

- Big Stone County
- This area in Pope County:
 - Bangor Twp
 - Barsness Twp
 - Ben Wade Twp
 - Blue Mounds Twp
 - Brooten
 - Chippewa Falls Twp
 - Cyrus
 - Farwell
 - Gilchrist Twp
 - Glenwood
 - Glenwood Twp
 - Grove Lake Twp
 - Hoff Twp
 - Lake Johanna Twp
 - Langhei Twp
 - Long Beach
 - Lowry
 - Minnewaska Twp
 - New Prairie Twp
 - Nora Twp
 - Rolling Forks Twp
 - Sedan
 - Starbuck
 - Walden Twp
 - White Bear Lake Twp
- This area in Stearns County:
 - Belgrade
 - Brooten
 - Crow Lake Twp
 - Crow River Twp
 - Elrosa
 - Freeport
 - Getty Twp
 - Lake George Twp

- Lake Henry
 - Lake Henry Twp
 - Millwood Twp
 - New Munich
 - North Fork Twp
 - Oak Twp
 - Raymond Twp
 - St. Martin
 - St. Martin Twp
 - St. Rosa
 - Spring Hill
 - Spring Hill Twp
 - Zion Twp
- Stevens County
- Swift County